



INITIATIVE WOMEN INTO LEADERSHIP E.V.

INFORMATION PACKAGE

OUR MISSION & PROMISE

- The Initiative Women into Leadership e.V (IWIL) has been established in November 2017
- IWIL is a Cross-Mentoring program to bridge the gap in leadership development for women.
 - Exclusive and sustainable network for women **at top level**
 - **Broad exchange of experience** beyond corporate mainstream
 - Promote diversity, drive innovation, and enable female leadership. We deliver a proof point for top management that a **career through the ranks is tangible**
 - It addresses the challenge of developing female leadership at the highest corporate levels.
- **Collaborative efforts** with member companies and leaders from diverse sectors.
- Personal mentorship by distinguished figures from the economy, culture, media, science, medicine, society, and more.
- Ongoing commitment to empowering more female talents to advance in their careers.
- Invitation for interested companies and individuals to engage with the program for further information and participation.

OUR BOARD



**Sabine
Hansen**

Chairwomen of the
Executive Board



**Dr. Natalie
Daghles**

Vice Chairwomen



**Dr. Werner
Grünewald**

Financial & Operation
Management



**Dr. Maike
Albers-Malkus**

Program &
Communication
Management



**Nicole
Riggers**

**Relationship
Management**

OUR TEAM



Juliana Korte

Office Management

initiative@iwil.eu



Tatsiana Suermann

Events & Office Coordinator

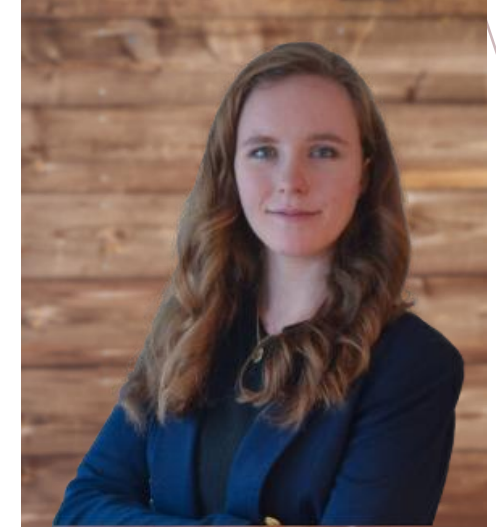
events@iwil.eu



Jasmin Biesenroth

Communications & Events

communications@iwil.eu



Jana-Selina Henn

Press

presse@iwil.eu

ADVISORY BOARD



Daniel Kapffer
CFO
DekaBank



Matthias Schellenberg
CEO
Deutsche Apotheker- und
Ärztebank



Melanie Wiese
CFO
Deutsche
Beteiligungs AG



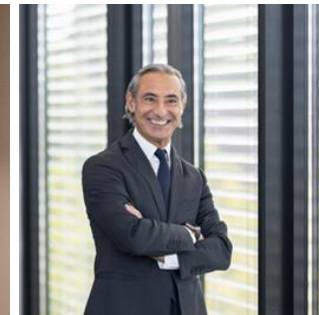
Dr. Elke Frank
Supervisory Board
Member
Scout24 Group



Jacqueline Harvey
Regional Director
China and Hongkong
Audi AG



Dr. Christian Kohlpaintner
CEO
Brenntag SE



Vito Volpe
CEO
Santander Consumer
Bank AG

OUR PURPOSE & TARGET GROUP

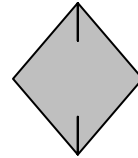
- **Cross-Mentoring program aimed at elevating female talents to top management roles.**
 - Facilitates experience sharing with established leaders across industries and disciplines.
 - Encourages personal and meaningful dialogue beyond company boundaries.
 - Seeks to fill the gap in development programs for women at the 1st and 2nd management levels.
 - Asserts that women at these levels are integral to a company's economic success.
 - Champions diverse management as a pathway to greater corporate success.
 - Dedicated to increasing the representation of women in mid-to-upper management.
 - Targets and prepares identified female talent for their next professional advancement.
 - Offers a unique and enduring network for women at high management levels.
- **Your Benefit:**
 - Provides access to an exclusive network for broad experience exchange.
 - Matches mentees with accomplished mentors from major corporations for guidance.

QUALITY GATEWAYS

- **Live Matching** by the means of speed dating (30 minutes à 2 rounds)
- **Mentoring Guidelines / Letter of Intent** to be signed by both parties
- **Letter of Commitment / Letter of Engagement** to be signed by Mentor/Mentee
- **Regular check-up calls** by Matching Committee / IWiL Board
- **Monthly Mentor / Mentees zoom** calls to share best practices / issues identified
- **Min. of Six personal/digital meet-ups** of the tandems per year
- **Mandatory networking events**, Kick Off, IWiL Summit, IWiL Graduation Ceremony
- **Evaluation** of the mentoring tandem

OUR MEMBERSHIPS: PERSONAL MEMBER

One-Time Admission Fee:
100 €



Annual Fee:
100 €

- Opportunity **to become a mentor**
- Proactive involvement in creating a diversified leadership team, decreasing internal barriers to diversity.
- are highlighted as exceptional executives with a true cause and by doing this, we promote their visibility beyond established leadership roles
- Regular engagement with the network through quarterly **membership calls or mentor calls** for strategic updates and support.
- Inclusion into all events and networking opportunities

3 – PILLAR-CONCEPT

Member Companies	Mentors	Mentees
<ul style="list-style-type: none">▪ are represented by top-level management participating as mentors▪ annually nominate female executives into IWIL Mentee-Pool▪ systematically develop their own high potentials▪ present themselves internally and externally as an attractive employer and systematically tie up their talents▪ get own organisation engaged and reduce internal resistance for a more diverse leadership team▪ comply better to the new ESG standards and respond adequately to the call for more diverse leadership from the capital markets	<ul style="list-style-type: none">▪ accompany female executives by sharing personal experiences and questions with the mentees▪ issue a statement for women in leadership positions through their membership▪ are part of an exclusive cross-company network and render support on personal level▪ get valuable external feedback by the means of reverse mentoring▪ are highlighted as exceptional executives with a true cause and by doing this, we promote their visibility beyond established leadership roles	<ul style="list-style-type: none">▪ are offered a tremendous opportunity to become part of an exclusive network and get personal access to top personalities by being nominated in the IWIL-program▪ issue a statement for women in leadership positions through their membership and are part of an exclusive cross-company network▪ bring up questions, topics and specific concerns in the meetings and actively use the suggestions, opportunities and contacts offered▪ gain internal and external visibility through press coverage helping them succeed in the organization

OUR PROCESS

How do we get women in leadership?

Through our innovative and sophisticated hybrid (digital & live) matching process, we match mentees with an individual mentor who is suitable for the mentee's needs and wishes.



Since trust is an important factor in mentoring relationships, the mentees can indicate who they would prefer as a potential mentor.



To fully satisfy everyone's expectations, mentors and mentees pledge confidentiality and, in a signed 'letter of intent', specify the form of communication (telephone, in person, via skype), the number of meetings, expectations, and goals.

OUR PROCESS

The mentees are pre-selected by the corporate member organization.

Personal Interviews with possible mentees, IWIL Board and our Matching Committee who will ultimately decide who will make it into the mentee class.

Two live-matching rounds a 30 minutes at the Kick Off event between each mentee/mentor tandem.

Once individual feedback is collected by mentees & mentors is collected, the final tandem will be assigned by the IWIL board.

Mentoring Duration of 12 Months: March to 28th of February

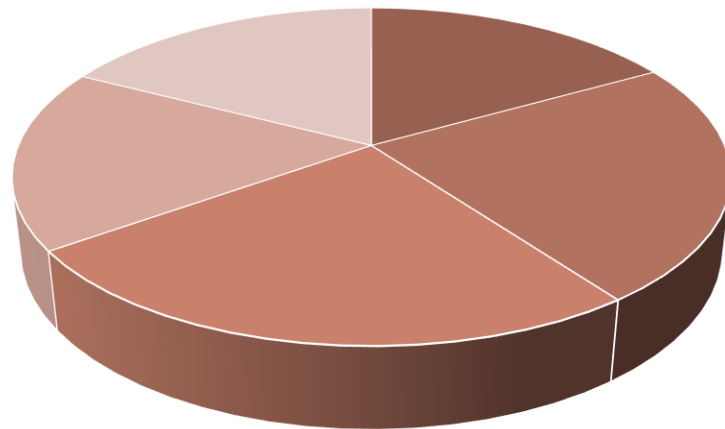
LETTER OF COMMITMENT (MENTOR)

- Commitment to act as **a mentor** in the Initiative Women into Leadership e.V. cross-mentoring program.
- Minimum of **6 in-person mentee meetings** within the mentoring year.
- Active involvement in scheduled **mentor calls**.
- Adherence to **mentoring guidelines**.
- Organization of **triangle talks** involving the mentee and their company.
- **Check-Ins with the IWIL Board** to discuss the mentoring process and quality.
- Focus on **career advancement** within the mentee's current company.
- Termination of tandem mentorship for the year if mentee resigns during the mentoring year.

SUCCESS STUDY

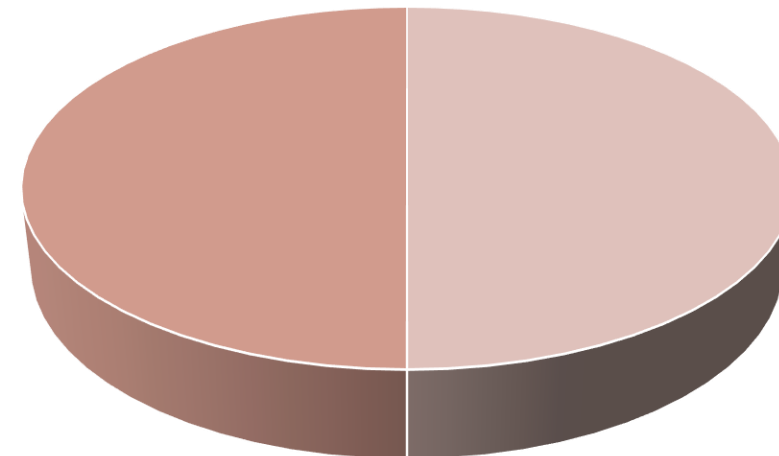
- Over the past five years, a total of 178 mentees have participated in our Cross-Mentoring-Program.
 - Of those 178 mentees, 89 mentees have already taken their next bis step in their careers.

Mentees in Total:



■ Mentees 2018 ■ Mentees 2019 ■ Mentees 2020
■ Mentees 2021 ■ Mentees 2022

Mentees with a promotion and same position:



■ Mentees with a promotion ■ Mentees with the same position

SELECTED MEMBER COMPANIES



DO YOU WANT TO TAKE THE NEXT STEP?

If you feel inspired by our initiative and would like to become part of it as a corporate member or top personality, we look forward to hearing from you. We would be very happy to engage into a first discussion with you and introduce you to IWIL in detail.



Office Management
Juliana Korte



+49 151 27252653



initiative@iwil.eu



Office & Events Assistant
Tatsiana Suermann



+49 160 92434740



events@iwil.eu



Communications & Events
Jasmin Biesenroth



+49 160 95039492



communications@iwil.eu